

Clear Country Code Manual

v1.0

1. Equipment: USB to RS232 Cable as Figure 1, Laptop

2. Software: ShineCountry.exe



Figure 1 USBtoRS232 cable

3. Process:

Before operating, please turn off AC switch, and turn on DC switch. If there are several inverters being connected with together via RS485 cable, please disconnect it as well.

Step1 Install the program “ShineBus” in your computer and connect the inverter to your computer via USB to RS232 cable (corresponding RS232 port on the bottom of inverter as Figure 3). Normally the cable should be used only if successful to install the corresponding driver.

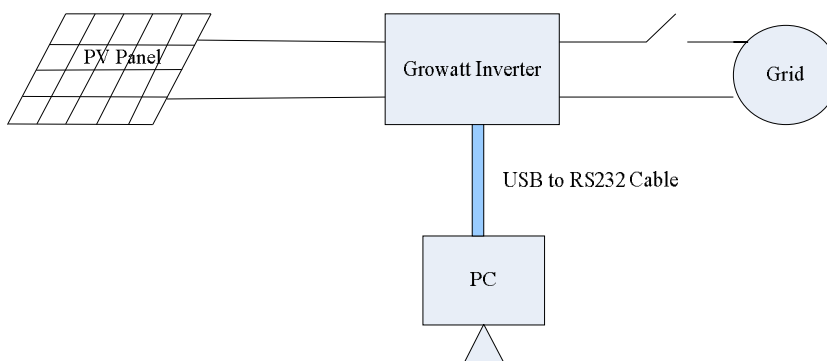


Figure 2 Connect PC or laptop to Inverter via USB to RS232 cable

Step2 Query the Com port address of your computer.

- (1) Open the device manager of computer.
- (2) Find out the com port address as Figure 4. If the automatic assigned com port No. is beyond 10, you should change it to below 10 manually.

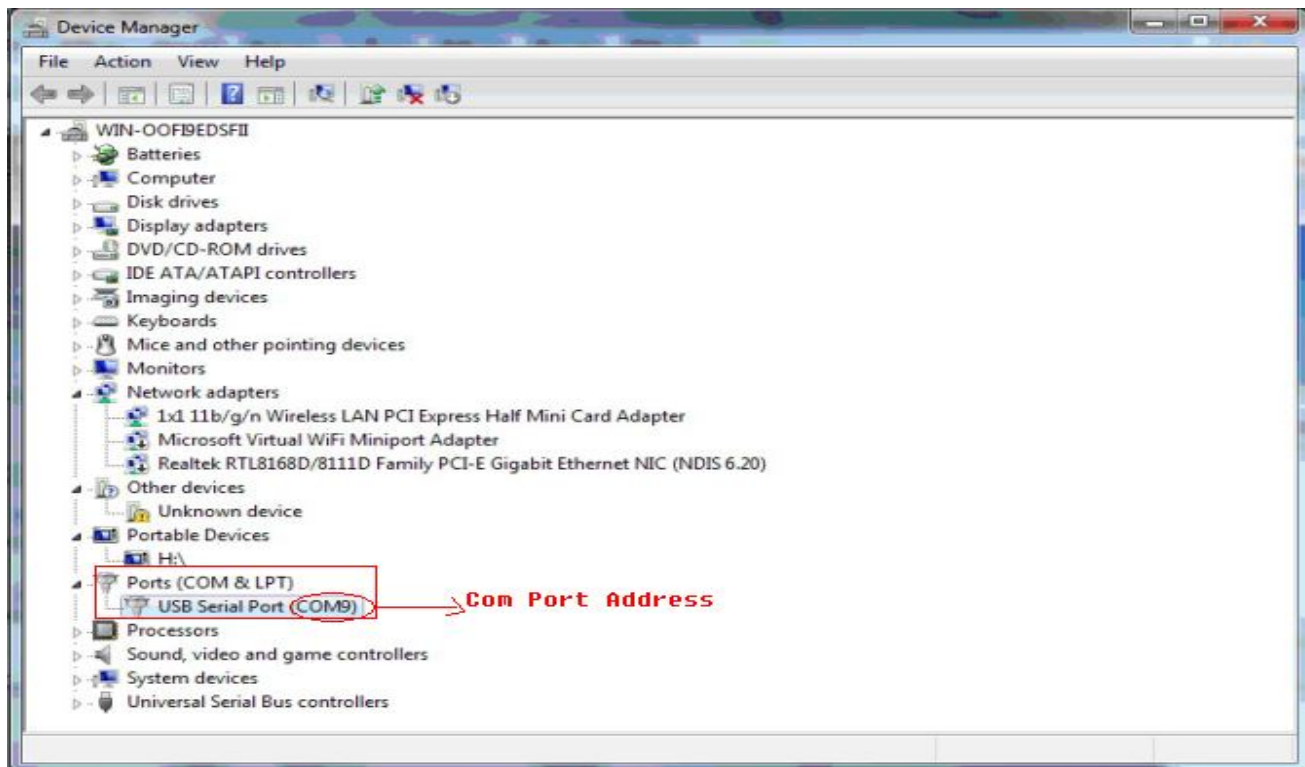
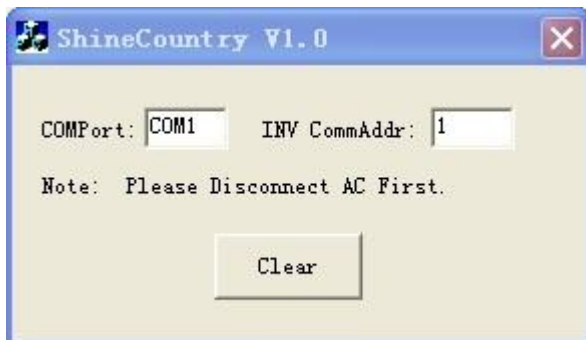


Figure 4 Query com port address

Step3 Clear the country selection

- (1) Start ShineCountry, fill the COM port address of your inverter in COMPort blank, fill inverter address in INV CommAddr blank.



- (2) Then click Clear option to clear the previous selection.
- (3) After that, the inverter will display the country code choose page, choose the code you want as the user manual.