

Firmware upgrade manual

1. Equipment: USB to RS232 Cable, Laptop
2. Software: ShineBus.exe
3. Process:

Before operating, please turn off AC switch, and turn on DC switch

Step1 Install the program “ShineBus” in your computer and connect the inverter to your computer via USB to RS232 cable. Normally the cable should be used only if successful to install the corresponding driver.

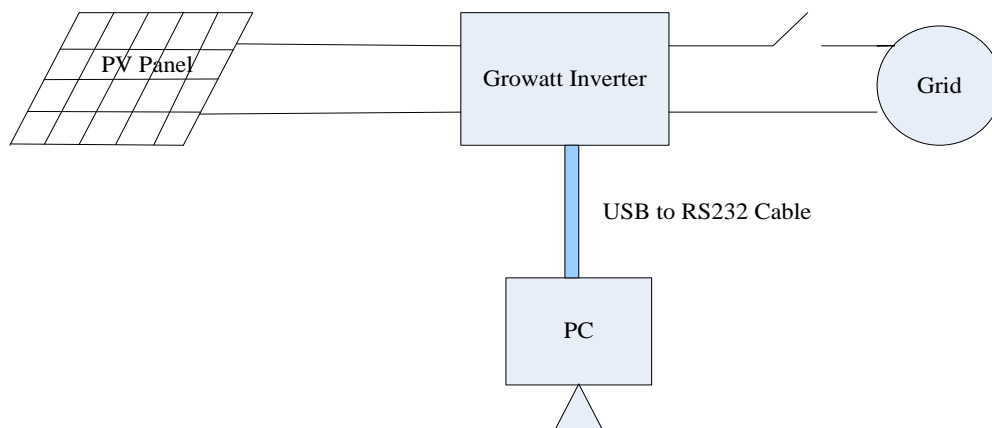


Figure 1 Connect PC to Inverter via USB to RS232 cable

Step2 Query the Com port address of your computer.

- (1) Open the device manager of computer.
- (2) Find out the com port address as Figure 2.

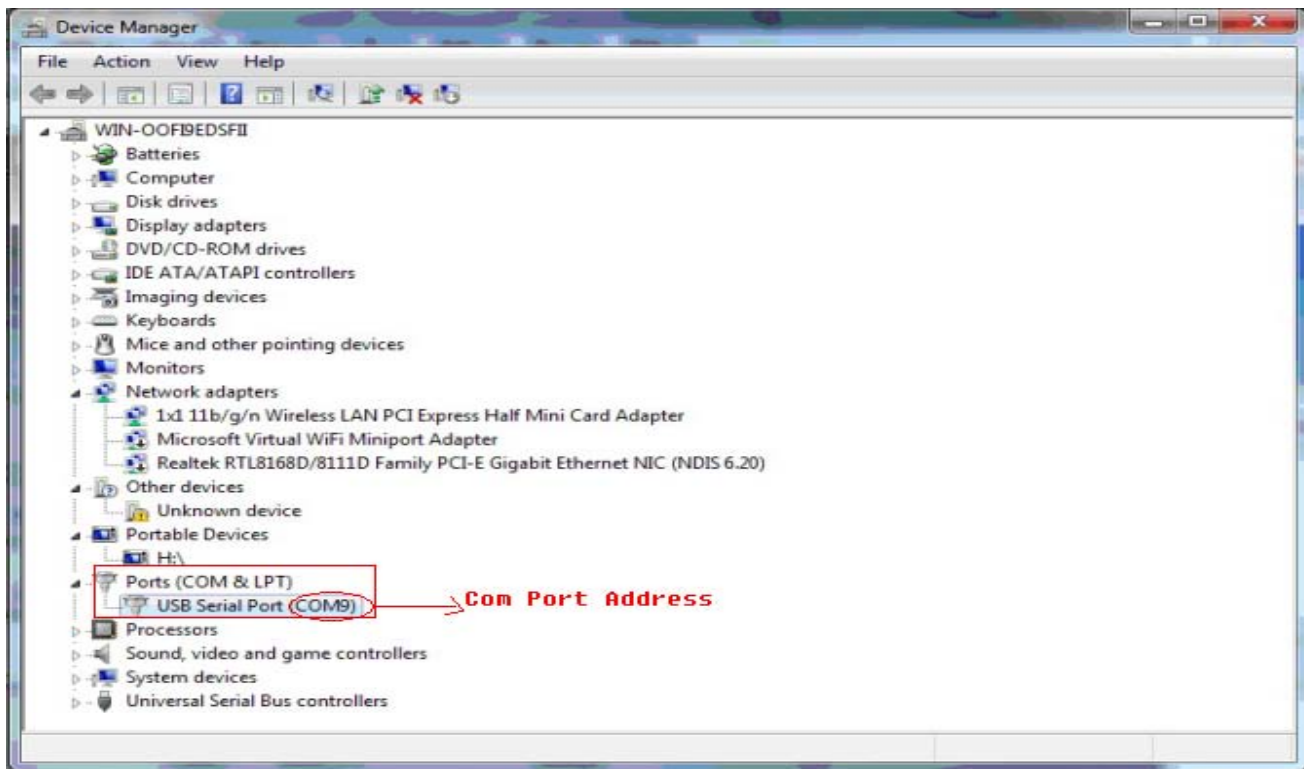


Figure 2 Query com port address

Step3 Read info of inverter

- (1) Double click ShineBus in your computer.
- (2) After opening the software, click Menu1(Device Info), fill the com port address with what you find out in Device Manager, fill the Inv Add this is your inverter COM port, you can get it from the inverter display on LCD by knock one by one. **The Inv Add default is 1.** Then click "Start", you will see some info of your inverter. Record the **Device Mode and Serial No.**

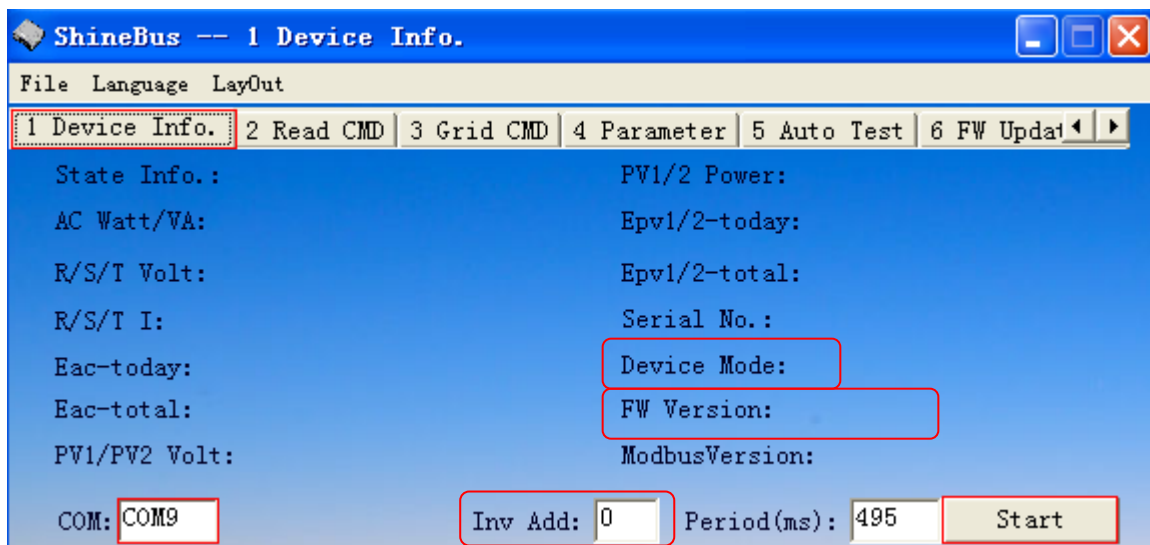


Figure 3 Device Info

Step4 Upgrading

- (1)Click Menu 6 (FW Update), click “Browse” to browse firmware I have sent to you as attached .
- (2)Click ‘Update’, the “Op State” will show the state of upgrading. The “Op Step” will show the upgrading percentage.
- (3) If the upgrading is finished, the “Op State” will show “Update OK”. Then the inverter will reboot.

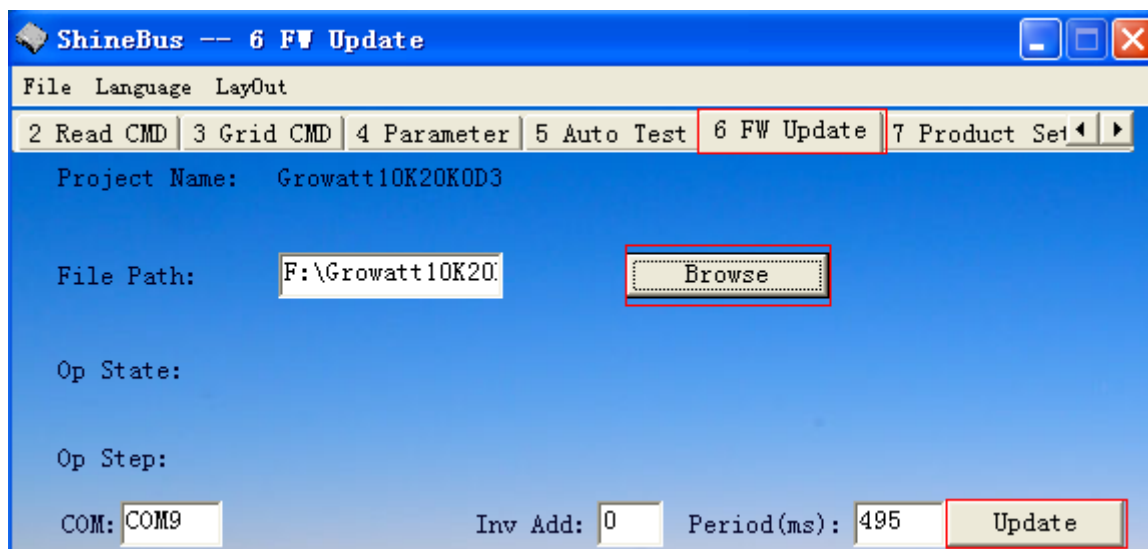


Figure 4 Upgrading

- (4)After the FW update, please reset the inverter Model and SerialNo as below picture what you have record before .

