

## Growatt Export Limitation Guide

---Growatt 3000-15000TL3-S

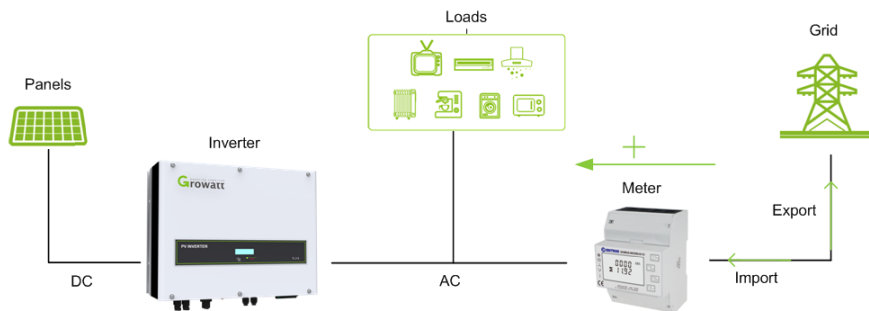
### 1. Meter selection

For export limitation function, only Growatt meter are approved.

1-phase meter is Growatt SPM, 3-phase meter is Growatt TPM, for 3-phase system export limitation, please use Growatt 3-phase meter.

### 2. Meter connection

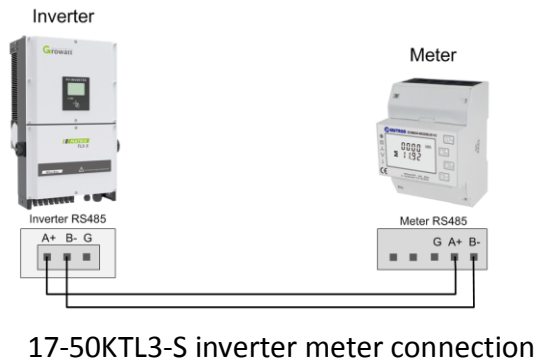
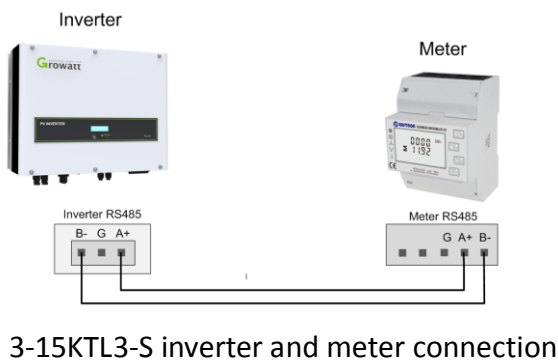
Follow the guide of direction on the meter, follow the arrows on the meter, input side connect to grid side, output connect to home load side, meter install between grid and load applications as below picture.



### 3. Communication with inverter

Inverter and meter communication via RS485 communication port, connect meter RS485 to inverter RS485 connector as below picture.

Note: check the RS485 ports define in the manual.



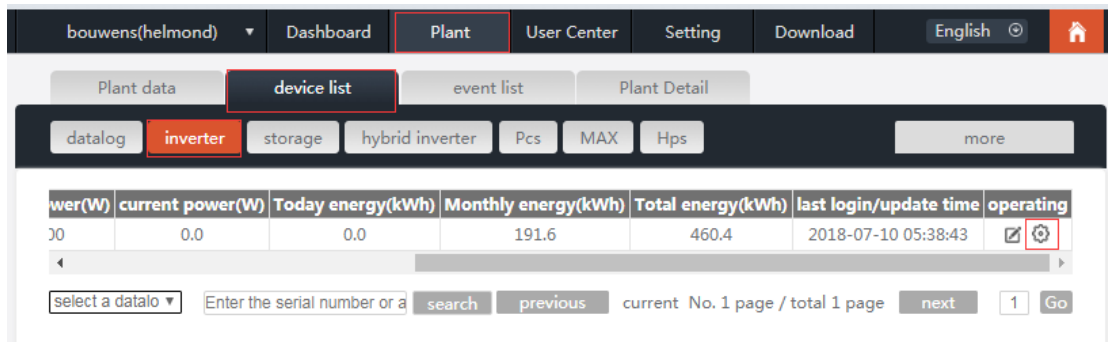
## 4. Configuration

### Export limitation enable/disable

When enable this function, means zero export, no power export to grid.

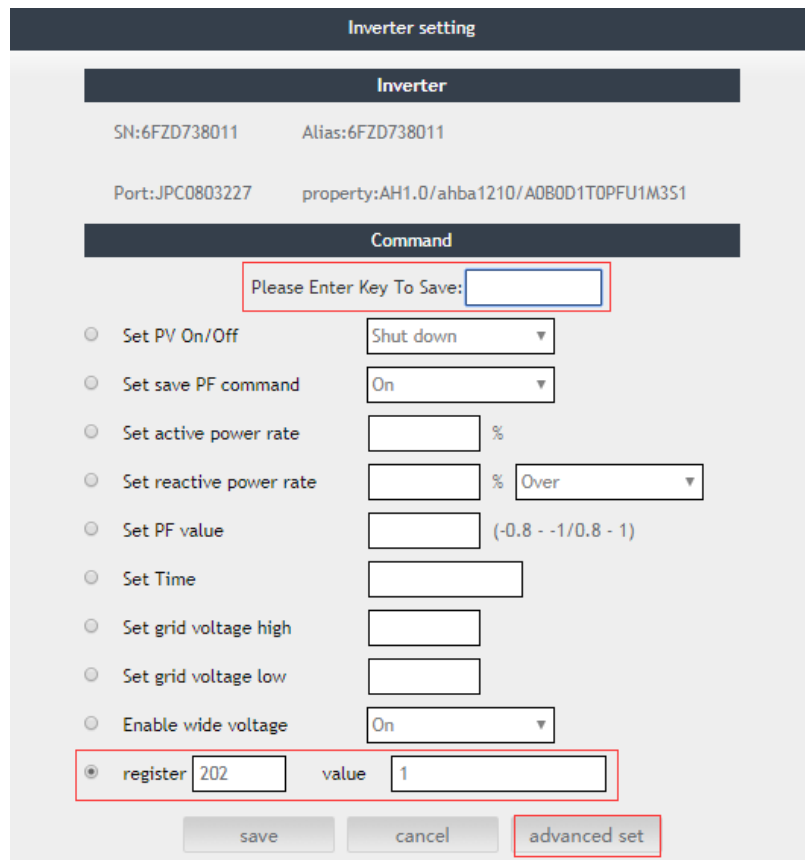
1. Configure via ShineServer

If the inverter is monitored online by Growatt monitoring system, you can do the configuration via ShineServer. Login your account, click plant and go to device list page, on inverter list, click the setting button, enter the setting page.



Click “advanced set”, select the register, and fill in 202 and value 1 as below picture, then fill in the password and click “save”, to enable this setting.

Note: Please check with Growatt service engineer for the password.



## 2. Configure via ShineBus and Modbus Test

Local configure with laptop, use USB to RS232 cable connect the laptop to the inverter RS232 port, and open the software to do the setting.

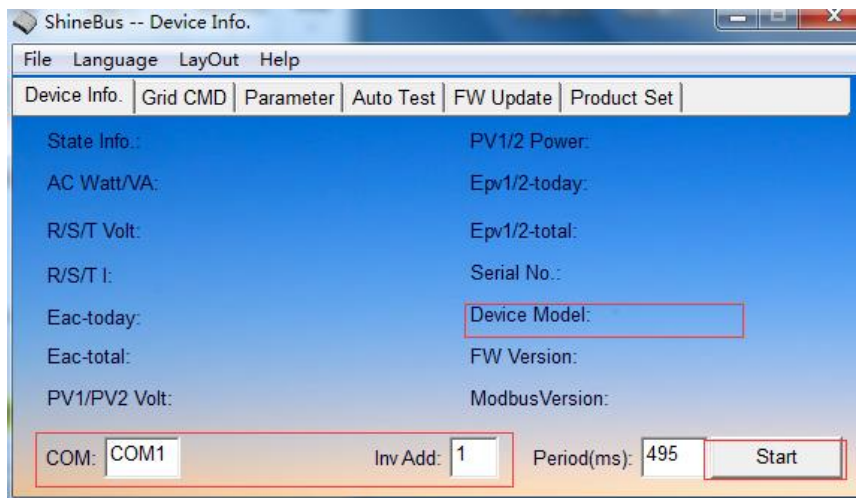
Note: Please ask Growatt service engineer for the software.

ShineBus setting the model value to enable the export limitation function.

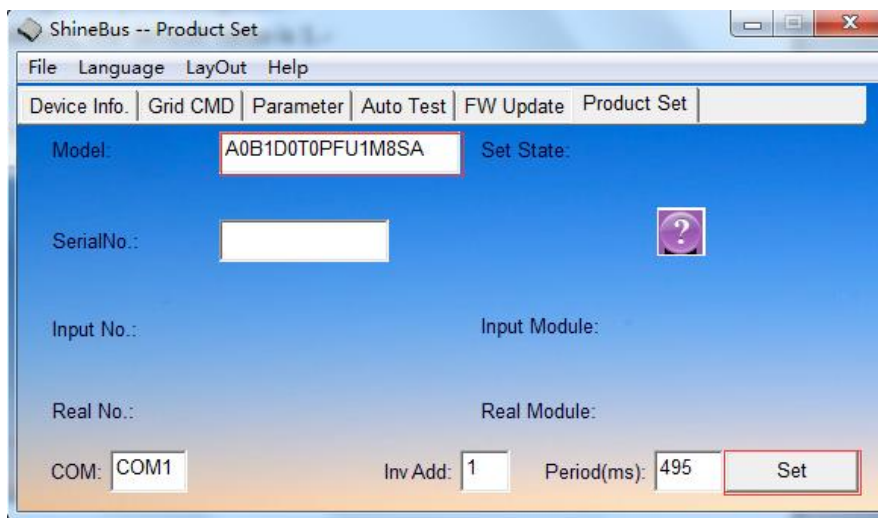
Read the inverter information first, and record the model value.

Note:

- COM number is the COM address of the USB of your laptop, you can check it in device manager on your computer.
- Inv Add is inverter address, the default value is 1.



Then in “Product Set” page, fill in Ax**B1**DxTxPFU1MxSx, only change B0 to B1 to enable export limitation function, keep others same as the model value you record, for example, if record model value is A0B0D0T0PFU1M8SA, then fill in A0**B1**D0T0PFU1M8SA, and click Set to save the setting.

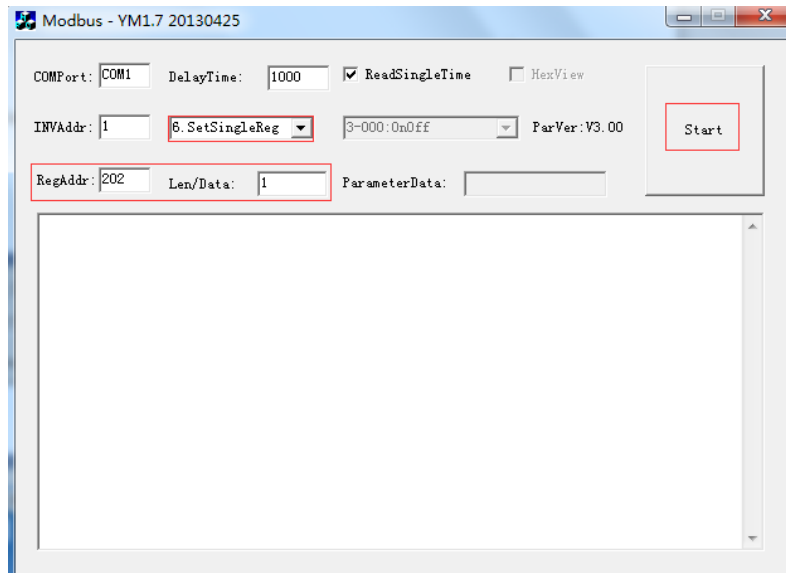


Enable the export limitation function via Modbus.

Select “6. SetSingleReg”, and fill in 202 and 1 as below picture, means set register 202 to value 1, and click “Start” to save the setting.

Note:

- COM number is the COM address of the USB of your laptop, you can check it in device manager on your computer.
- Inv Add is inverter address, the default value is 1.

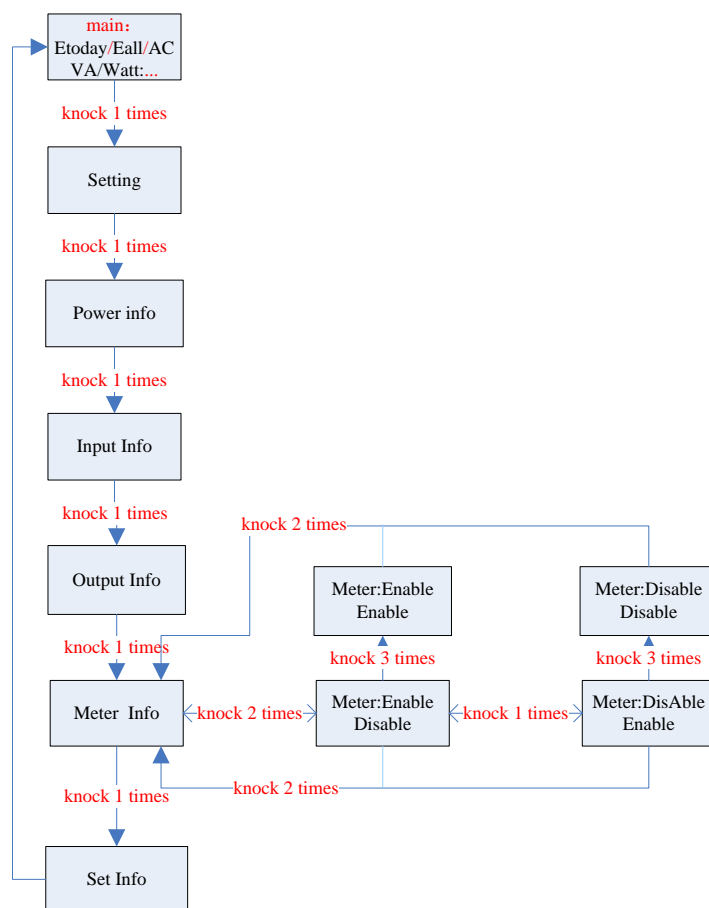


### 3. Configure via LCD

It's very easy to enable export control via LCD by knocking, please refer to below flow chart to do the setting. Come to “Meter Info” page, double knock to enter the Meter enable and disable page, fast knock 3 times to confirm enable it.

Note:

- Knock 1 times: next page
- Knock 2 times: exit/entry interface
- Knock 3 times: confirm setting information



## Export Power Limitation Configuration

After enable export limitation function, means zero export to grid, if allow system export certain power to grid, then you need set the export power limitation value. Export power limitation only can be set via ShineServer and Modbus Test.

### 1. Configure via ShinePhone APP/ ShineServer

In inverter setting page, click “Advance set”, select “Register”, fill in register 201 and the value that you want to export to grid, for example, fill in 3000 means allowed system export 3000W power to grid side. Then fill in the password and click “save” to save the setting to inverter.

Note: Please check with Growatt service engineer for the password.

2. Configure via Modbus Test

Open Modbus Test software, and fill in register 201 and the value that you want to export to grid, for example, fill in 3000 means allowed system export 3000W power to grid side. Then fill in the password and click “Start” to save the setting.

Note: Please ask Growatt service engineer for the Modbus Test software.